

Geocaching



1. Define Geocaching.
2. What is a GPS receiver?
3. Demonstrate 2 ways of finding the location of a Geocache in your area on the Geocache App
4. Demonstrate entering the latitude and longitude coordinates into the GPS to find a Geocache in your area.
5. Define the following terms:
 - a. Traditional cache
 - b. Micro-cache
 - c. Virtual cache
 - d. Multi-level cache
 - e. Travel bug
6. What items may be left in a geocache? Which items may not?
7. Know and practice good Travel Bug Etiquette
8. What is meant by Cache In, Trash Out?
9. Find 3 Geocaches in your area, at least one of which must be a regular (traditional) cache.
10. Write about your geocache find in your logbook on the geocache website.
11. Discuss Matthew 6:19-21 and Jeremiah 29:13 and compare them to geocaching.
12. Discuss safety concerns you should consider when geocaching.



1. Define Geocaching

Geocaching is a world wide outdoor treasure hunt.

'cache' – any kind of collection of things, you hide in a secret place

'geo' – anywhere on the earth

[Video](#)



1. When was the First Geocache hidden?

a) 1995

b) 1986

c) 2000

d) 1945



1. When was the First Geocache hidden?

a) 1995

b) 1986

c) 2000

d) 1945





Dave Ulmer

May 3, 2000
First Cache was hidden
Great American GPS Stash Hunt



Quiz: What was hidden in the first geocache?

- a) Video
- b) Books
- c) Sling shot
- d) Pencil



Quiz: What was hidden in the first geocache?

- a) Video
- b) Books
- c) Sling shot
- d) Pencil



Quiz: How long did it take for the first geocache to be found?

- a) 1 week
- b) 3 weeks
- c) 3 months
- d) 3 days



Quiz: How long did it take for the first geocache to be found?

- a) 1 week
- b) 3 weeks
- c) 3 months
- d) 3 days



Over 2 Million
Caches
Worldwide

8761 in London,
UK



Quiz: Where do the word 'cache' come from?

a. French

b. Italian

c. 18th Century English



Quiz: Where do the word 'cache' come from?

a. French

b. Italian

c. 18th Century English



What Do I Need?

GPS RECEIVER

an electronic device that
pinpoints your exact
location



What Do I Need?

GPS RECEIVER

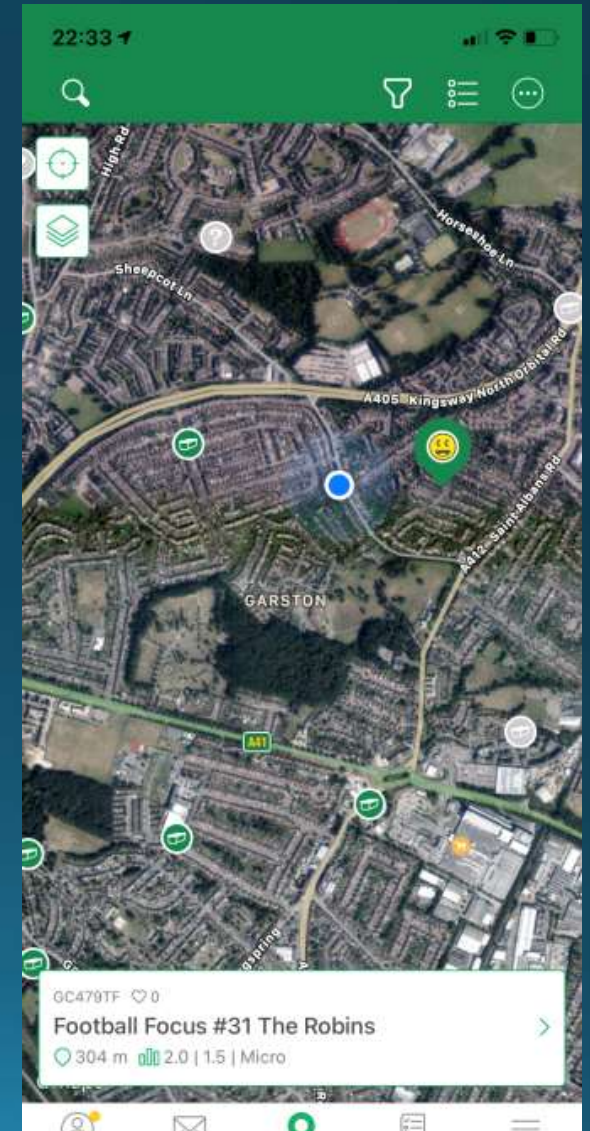
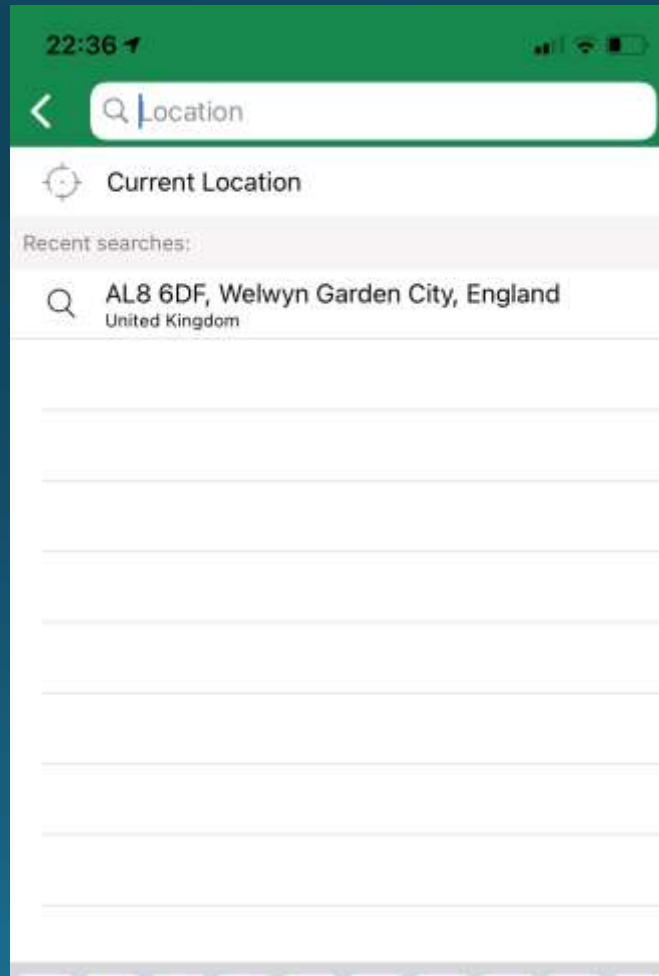
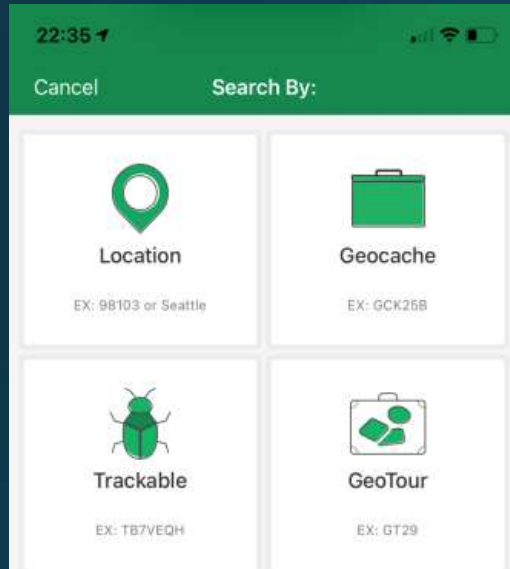
an electronic device that
pinpoints your exact
location

Today its A Smart Phone



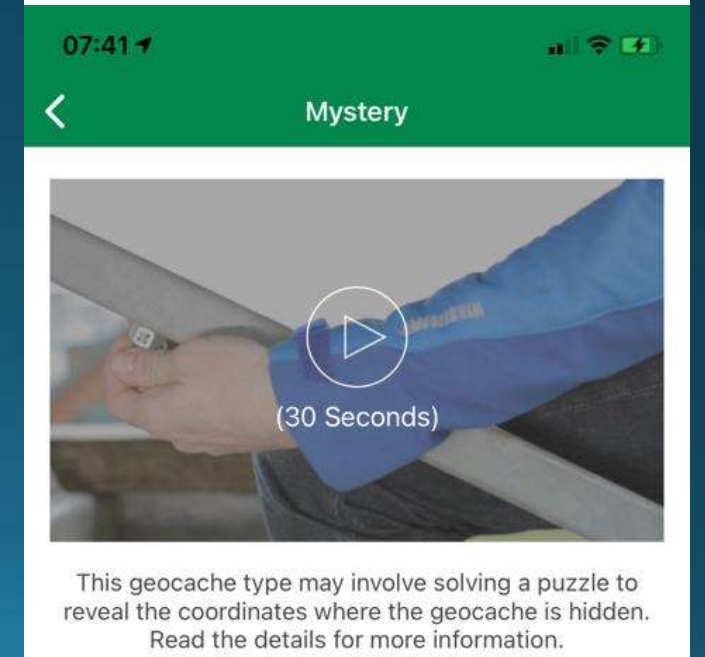
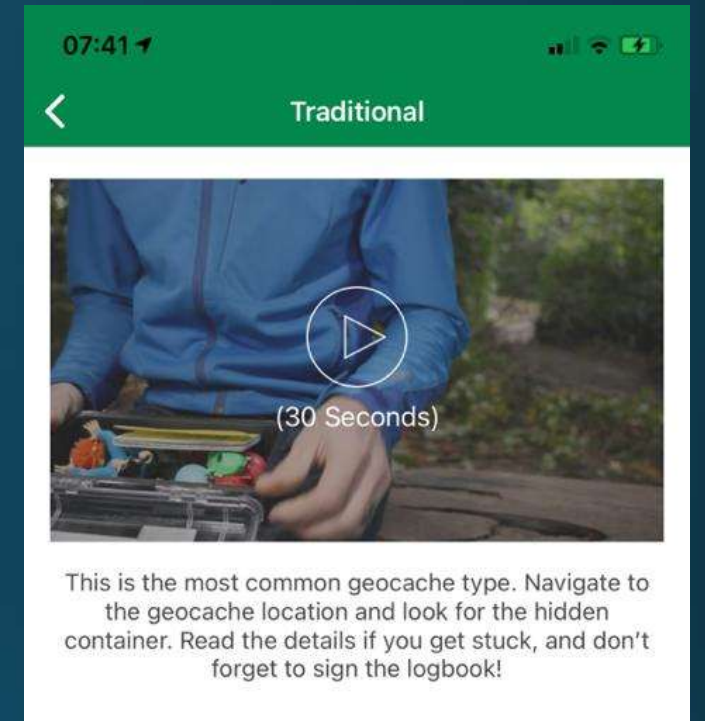
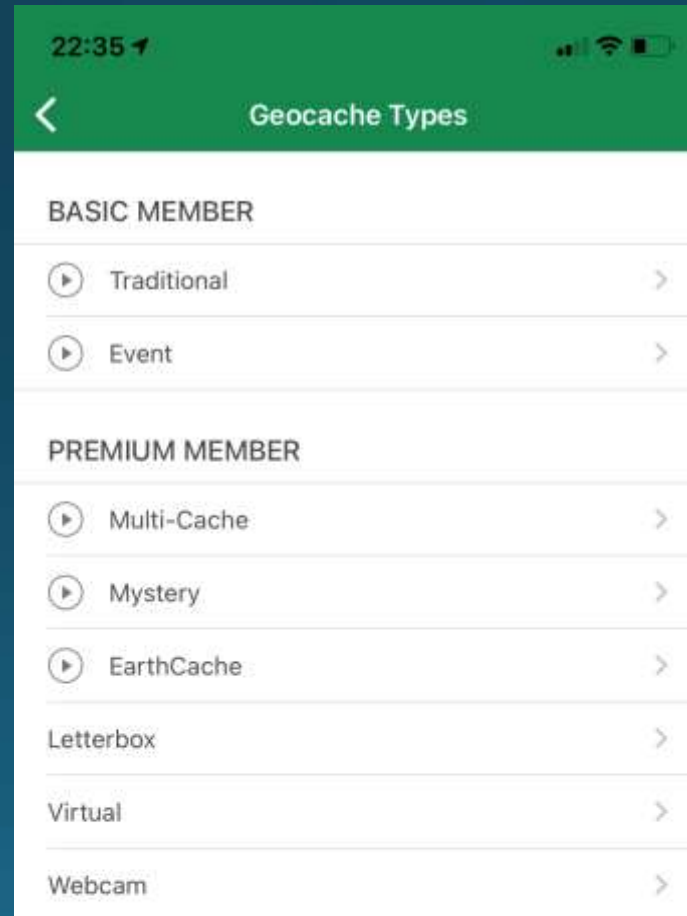
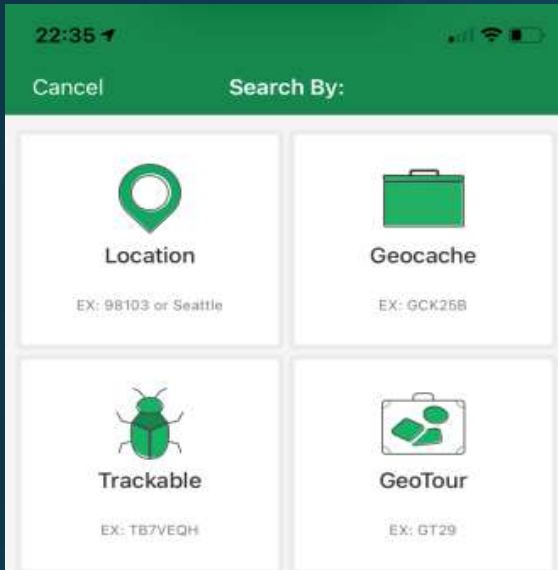
Demonstrate 2 ways of finding the location of a Geocache in your area on the Geocache App or Website

LOCATION



Demonstrate 2 ways of finding the location of a Geocache in your area on the Geocache App or Website

Geocache Type



Demonstrate entering the latitude and longitude coordinates into the GPS to find a Geocache in your area.

- **Depends on your receiver**
- **Cell Phones do it automatically**
- **Geocache needs to be simple**
- **Ask a Local**



5. Define the following terms:

a. Traditional cache

The traditional bucket, Tupperware container, or small canister with trinkets to collect.

b. Micro-cache

c. Virtual cache

d. Multi-level cache

e. Travel bug



5. Define the following terms:

a. Traditional cache

The traditional bucket, Tupperware container, or small canister

b. Micro-cache

Very small container with usually a little log book/paper

c. Virtual cache

d. Multi-level cache

e. Travel bug



5. Define the following terms:

a. Traditional cache

The traditional bucket, Tupperware container, or small canister

b. Micro-cache

Very small container with usually a little log book/paper

c. Virtual cache

Discover a location rather than a container

d. Multi-level cache

e. Travel bug



[=>> RULES AND PRIZES](#)[=> ALL GEOCACHING CHALLENGES \(WITH DATES\)](#)

PHOTO GEOCACHING



"As a travel photographer I cannot work anymore since the COVID outbreak. I miss my trips around the world a lot.

Soon I realised - I am not alone, many people are having the strong desire to see again more of the world and learn about foreign countries and cultures.

The idea was born - the Online Photo Geocaching Challenges! The feedback was amazing - people from all over the world came to join me in this online adventure."

Joana Kruse

Travel to beautiful photo spots around the world and discover the area by solving fun challenges.

It is not a trivia quiz - it is real geocaching where you have to explore, discover, search, and orientate yourself.

It's real fun and a bit challenging.



5. Define the following terms:

a. Traditional cache

The traditional bucket, Tupperware container, or small canister

b. Micro-cache

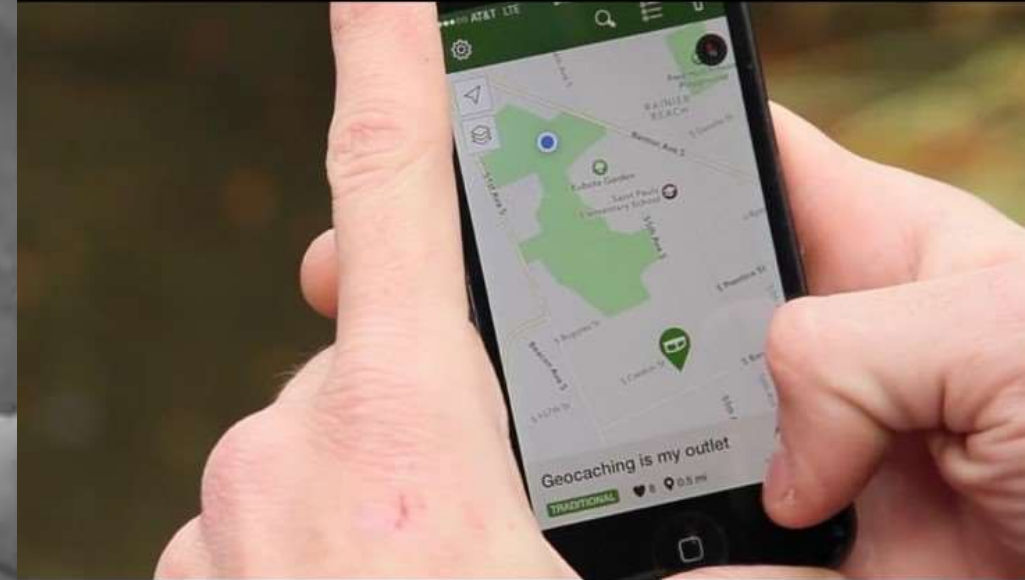
Very small container with usually a little log book/paper

c. Virtual cache

Discover a location rather than a container

d. Multi-level cache

Series of caches with clues leading to a final destination



a. Traditional cache

The traditional bucket, Tupperware container, or small canister

b. Micro-cache

Very small container with usually a little log book/paper

c. Virtual cache

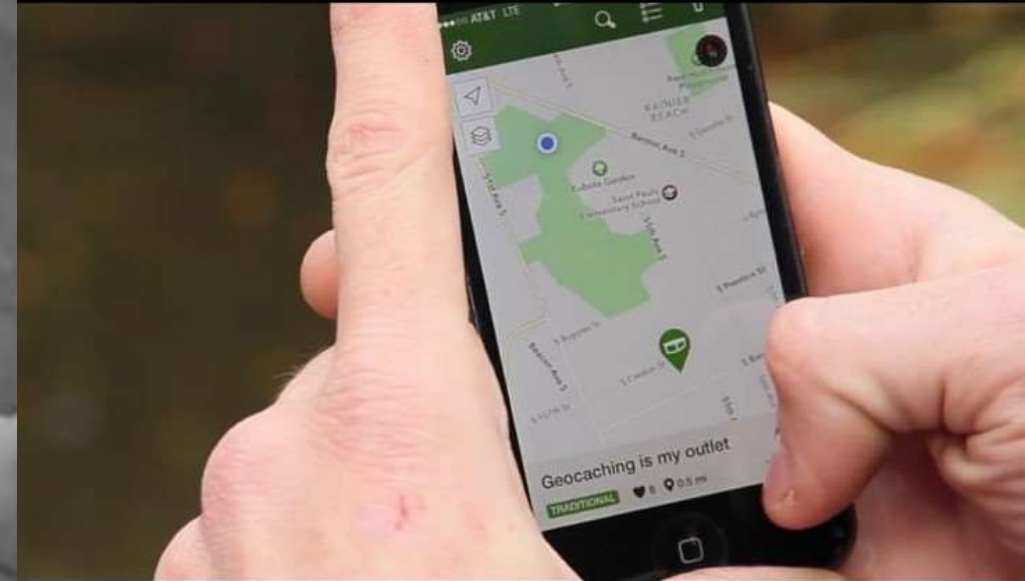
Discover a location rather than a container

d. Multi-level cache

Series of caches with clues leading to a final destination

e. Travel bug/ Trackable

A trackable trinket that gets moved from location to location



6. What items may be left in a geocache?

What items may NOT be left?



6. What items may be left in a geocache?

Toys, books, keyrings, pens, pencils,
fridge magnets, crafts, etc
Anything that you won't mind sharing.

What items may NOT be left?

Sharp instruments, food, medicines,
flammable items, perishables,
valuables, illegal items, etc



7. Know and practice good Travel Bug Etiquette

8. What is meant by Cache In, Trash Out?

9. Staying Safe

[Video](#)



Quiz: What is a 'muggle'?

- a. A Police man
- b. A Curious, Suspicious on-looker
- c. A Dog on a leash



Quiz: What is a 'muggle'?

a. A Police man

b. A Curious, Suspicious on-looker

c. A Dog on a leash



Quiz: What is meant by Cache in, Trash Out?

a. Pay for rubbish?

b. Dump your rubbish and you get paid?

c. Pick up litter, and keep your geocache area neat and tidy?



Quiz: What is meant by Cache in, Trash Out?

a. Pay for rubbish?

b. Dump your rubbish and you get paid?

c. Pick up litter, and keep your geocache area neat and tidy?



9. Find 3 Geocaches in your area, at least one of which must be a regular (traditional) cache.

10. Write about your geocache find in your logbook on the geocache website.



FINDING A GEOCACHE

22:35

Cancel

Search By:



Location

EX: 98103 or Seattle



Geocache

EX: GCK25B



Trackable

EX: TB7VEQH



GeoTour

EX: GT29

22:36

< Location

Current Location

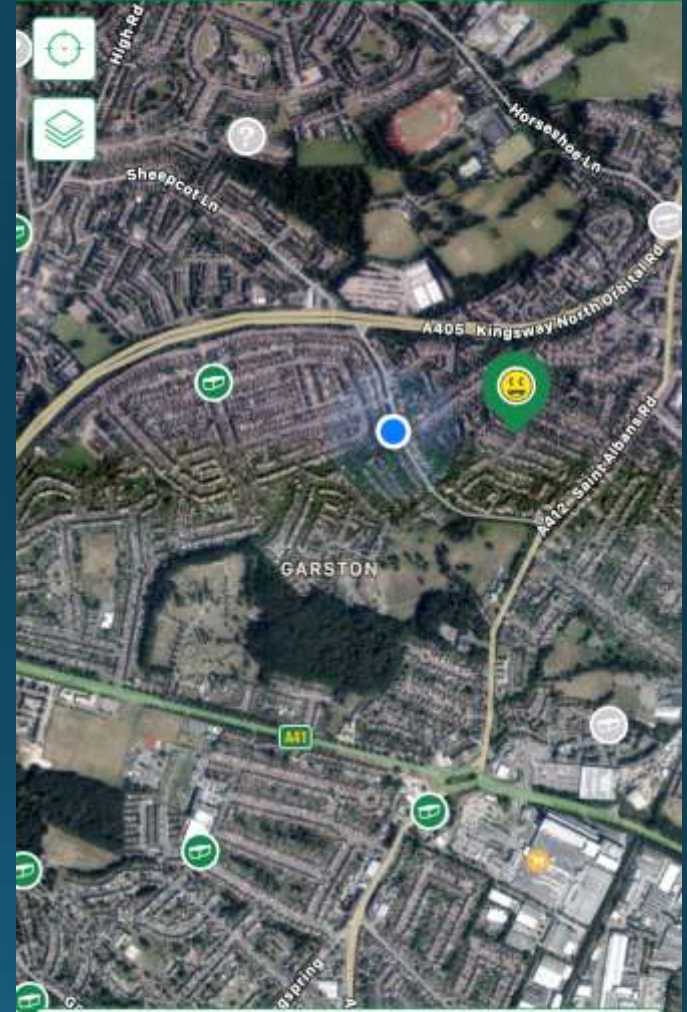
Recent searches:

AL8 6DF, Welwyn Garden City, England
United Kingdom



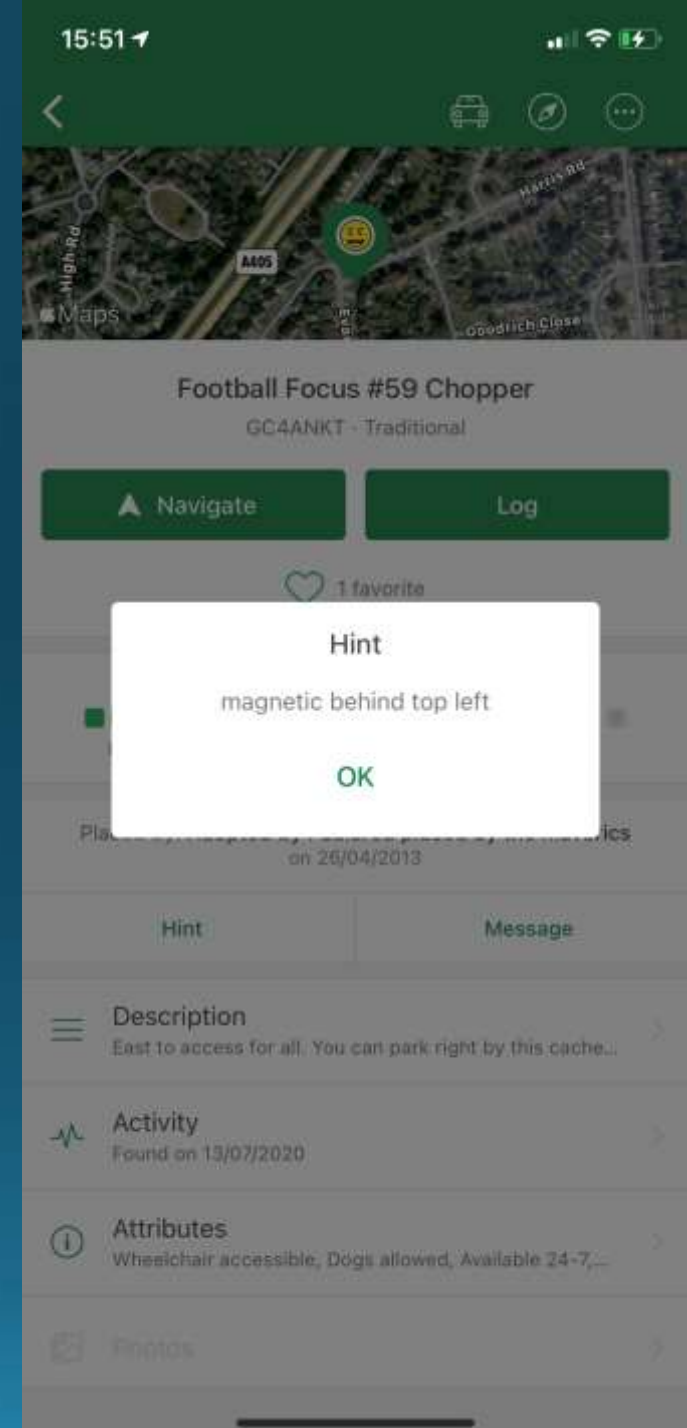
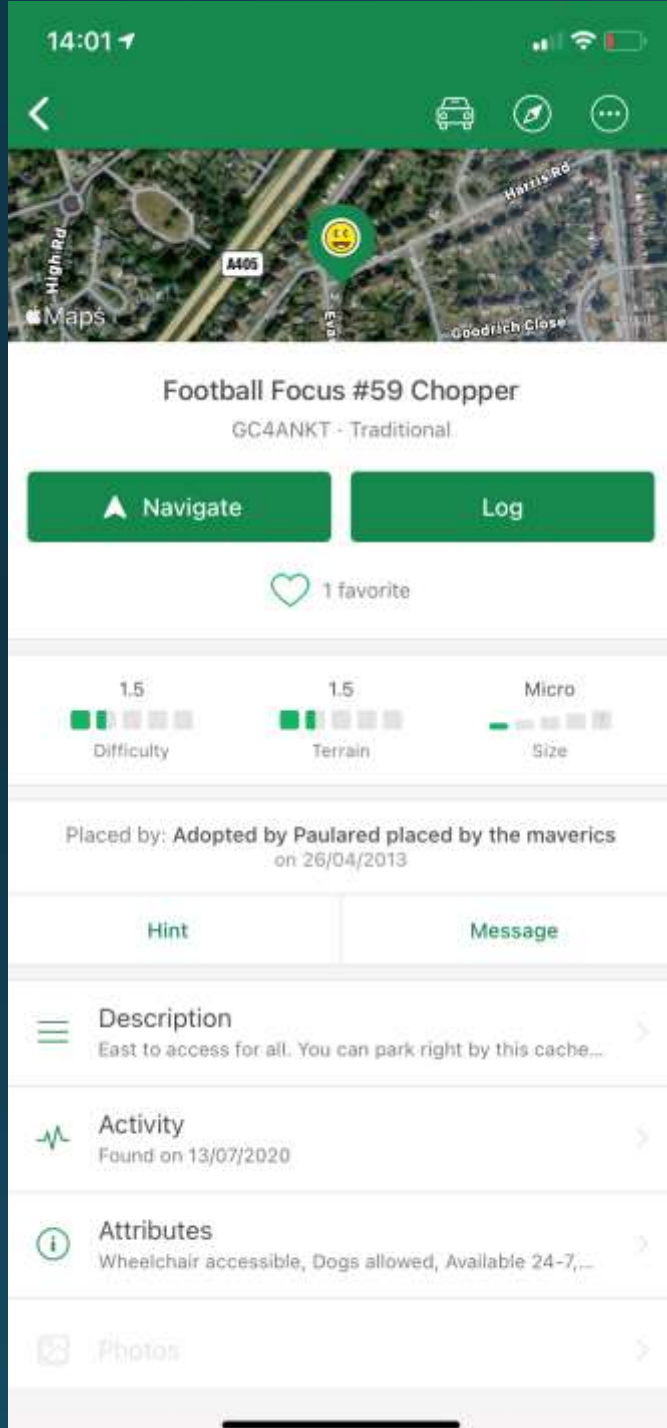
22:33

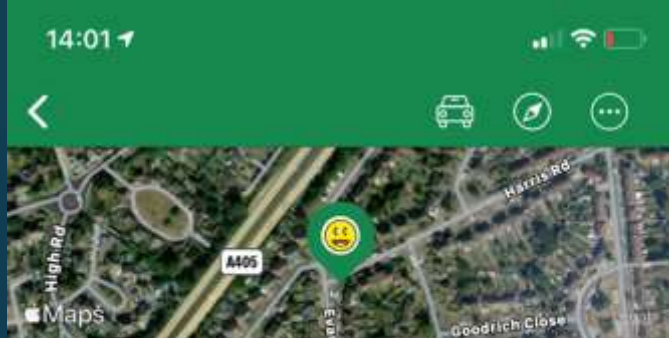
Search icons



GC479TF 0
Football Focus #31 The Robins
304 m 2.0 | 1.5 | Micro


Profile Messages Map Lists More





Football Focus #59 Chopper

GC4ANKT · Traditional

 [Navigate](#)

[Log](#)

 1 favorite

1.5

Difficulty

1.5

Terrain

Micro

Size

Placed by: **Adopted by Paulared** placed by the maverics
on 26/04/2013

[Hint](#)

[Message](#)



Description

East to access for all. You can park right by this cache...



Activity

Found on 13/07/2020



Attributes

Wheelchair accessible, Dogs allowed, Available 24-7,...



[Photos](#)



FINDING A GEOCACHE

VIDEO





Football Focus #59 Chopper

GC4ANKT · Traditional

Navigate

Log

1 favorite

1.5
Difficulty

1.5
Terrain

Micro
Size

Placed by: Adopted by Paulared placed by the maverics
on 26/04/2013

Hint

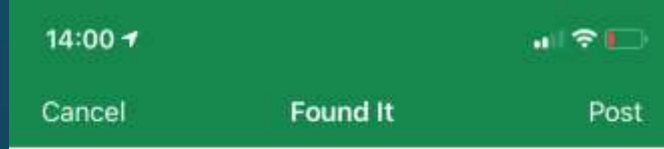
Message

Found It

Did Not Find (DNF)

Write Note

Cancel



Lovely one. Hidden in similar place like the other cache. Hope to complete the series soon.



Draft

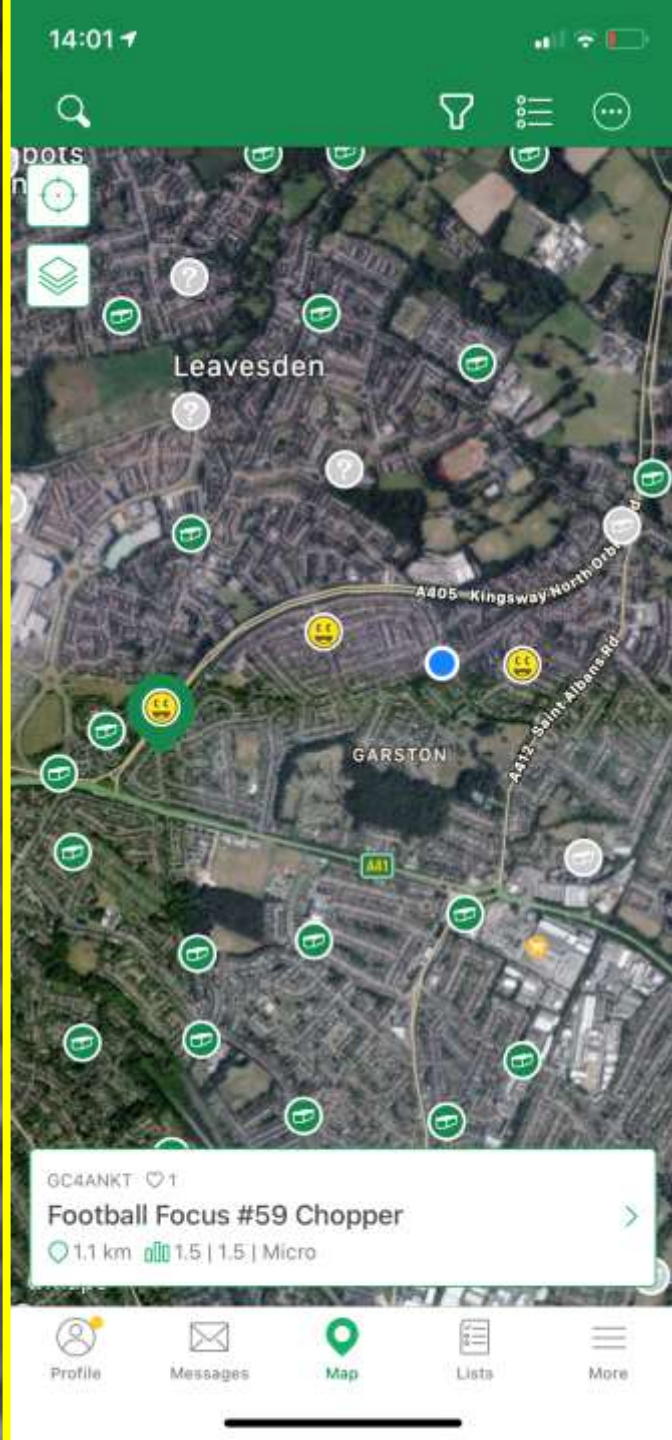


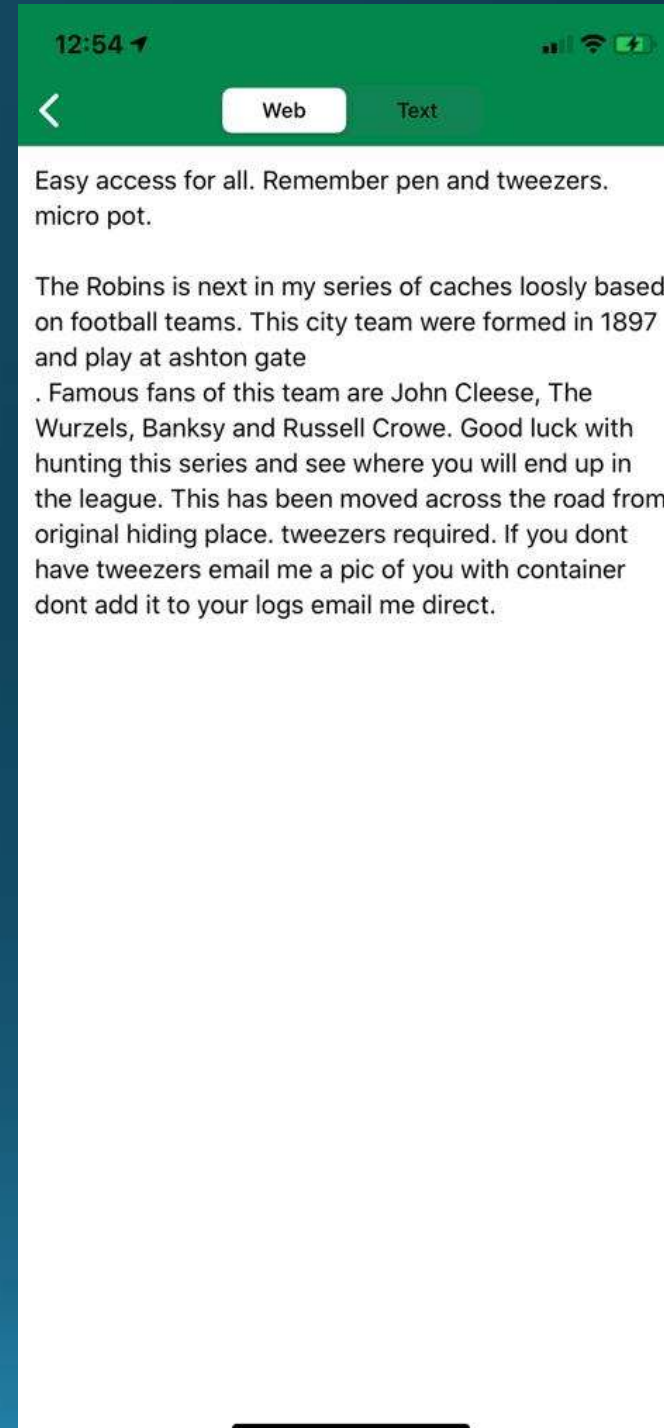
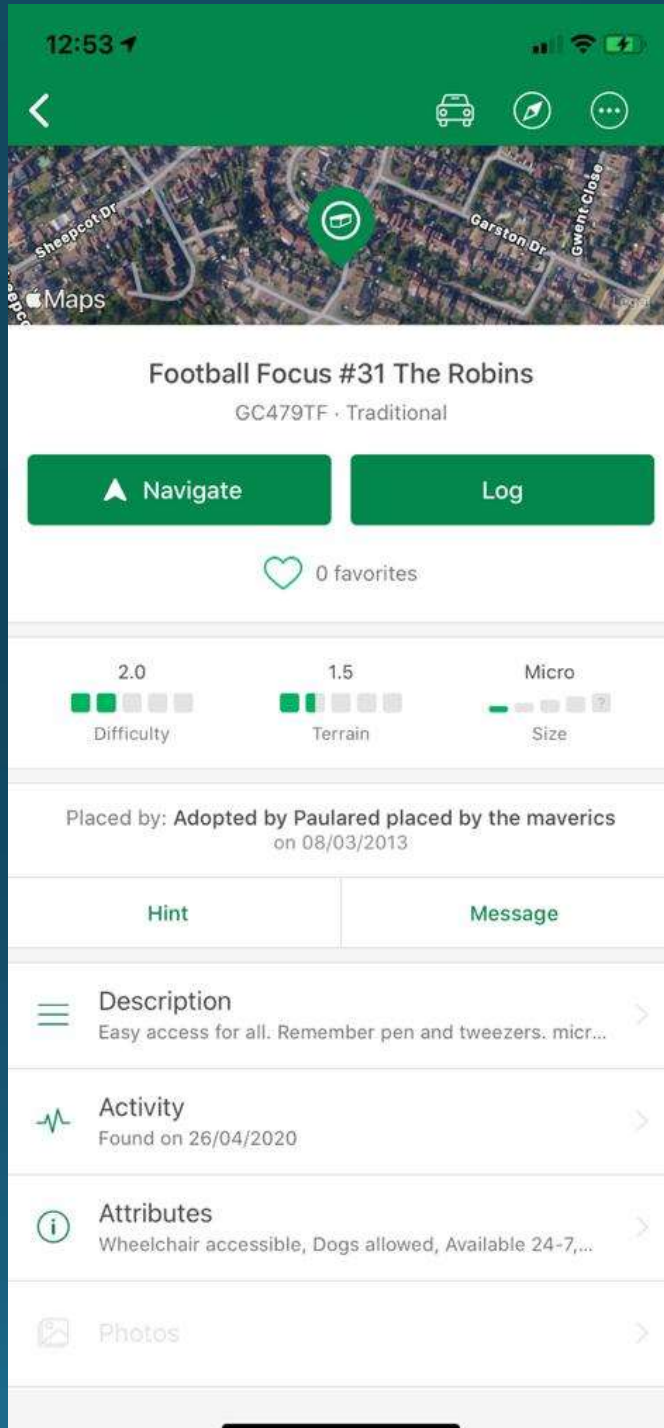
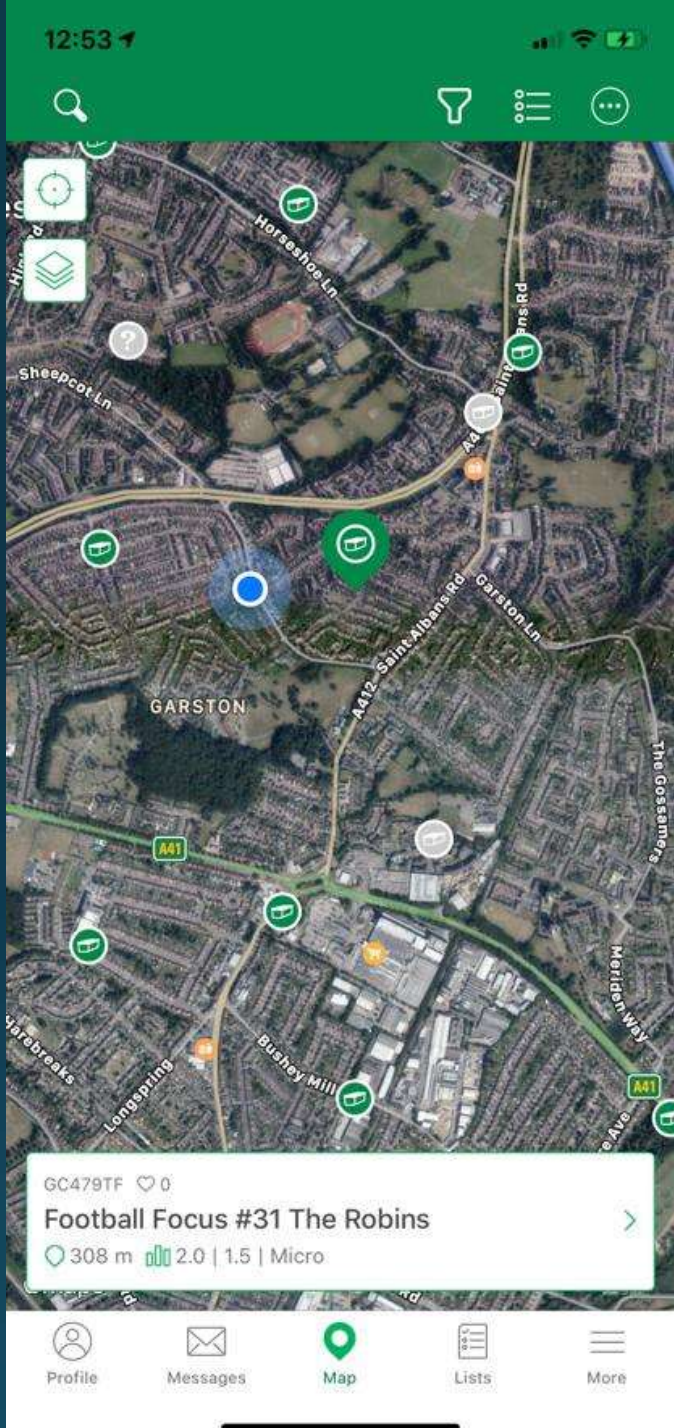
20 total finds

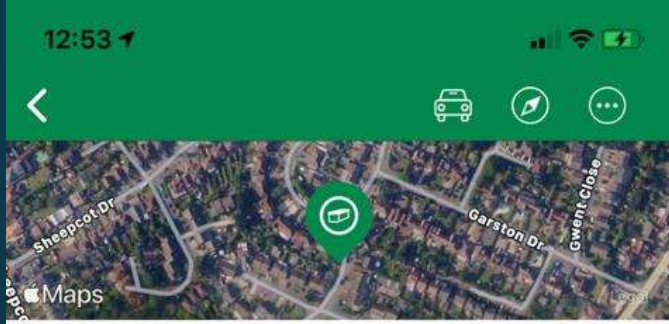
TIP: find more geocaches, see more geocache types, and get extra features with Geocaching Premium.

Upgrade

Continue







Football Focus #31 The Robins
GC479TF · Traditional

[Navigate](#) [Log](#)

0 favorites

Difficulty: 2.0 Terrain: 1.5 Size: Micro

Placed by: Adopted by Paulared placed by the maverics on 08/03/2013

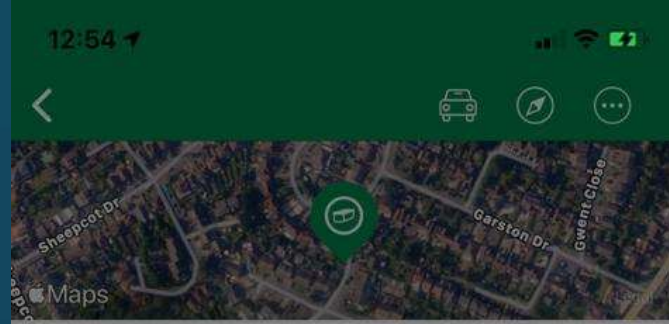
[Hint](#) [Message](#)

Description
Easy access for all. Remember pen and tweezers. micr...

Activity
Found on 26/04/2020

Attributes
Wheelchair accessible, Dogs allowed, Available 24-7,...

Photos



Football Focus #31 The Robins
GC479TF · Traditional

[Navigate](#) [Log](#)

0 favorites

Hint

Side of the green metal mesh.

[OK](#)

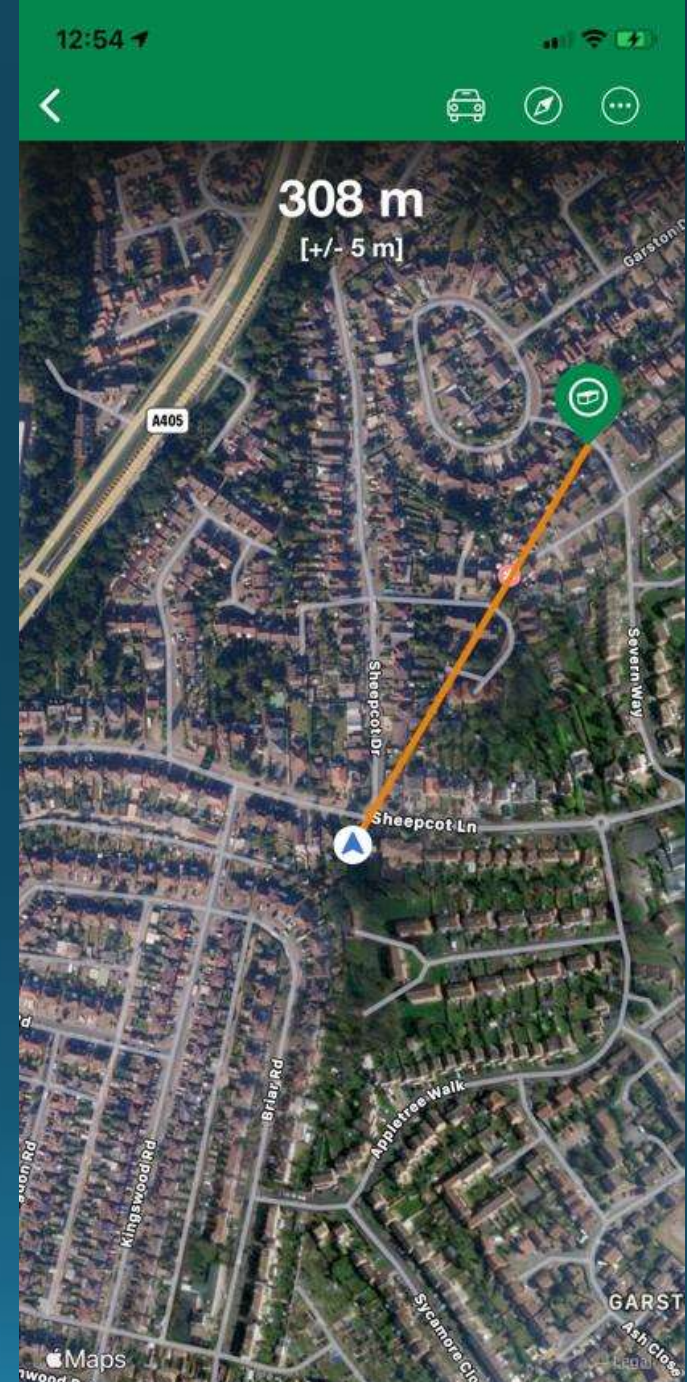
[Hint](#) [Message](#)

Description
Easy access for all. Remember pen and tweezers. micr...

Activity
Found on 26/04/2020

Attributes
Wheelchair accessible, Dogs allowed, Available 24-7,...

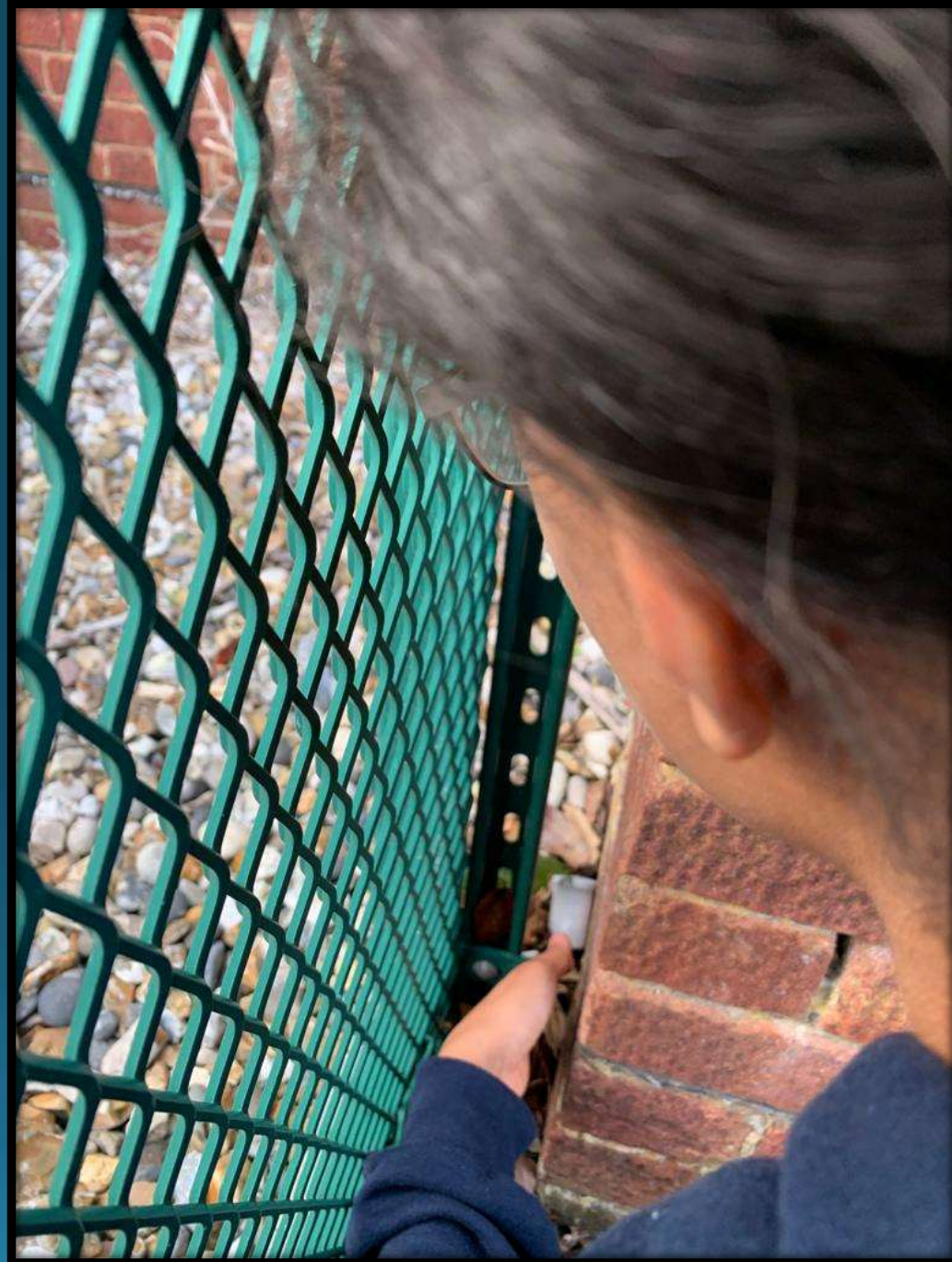
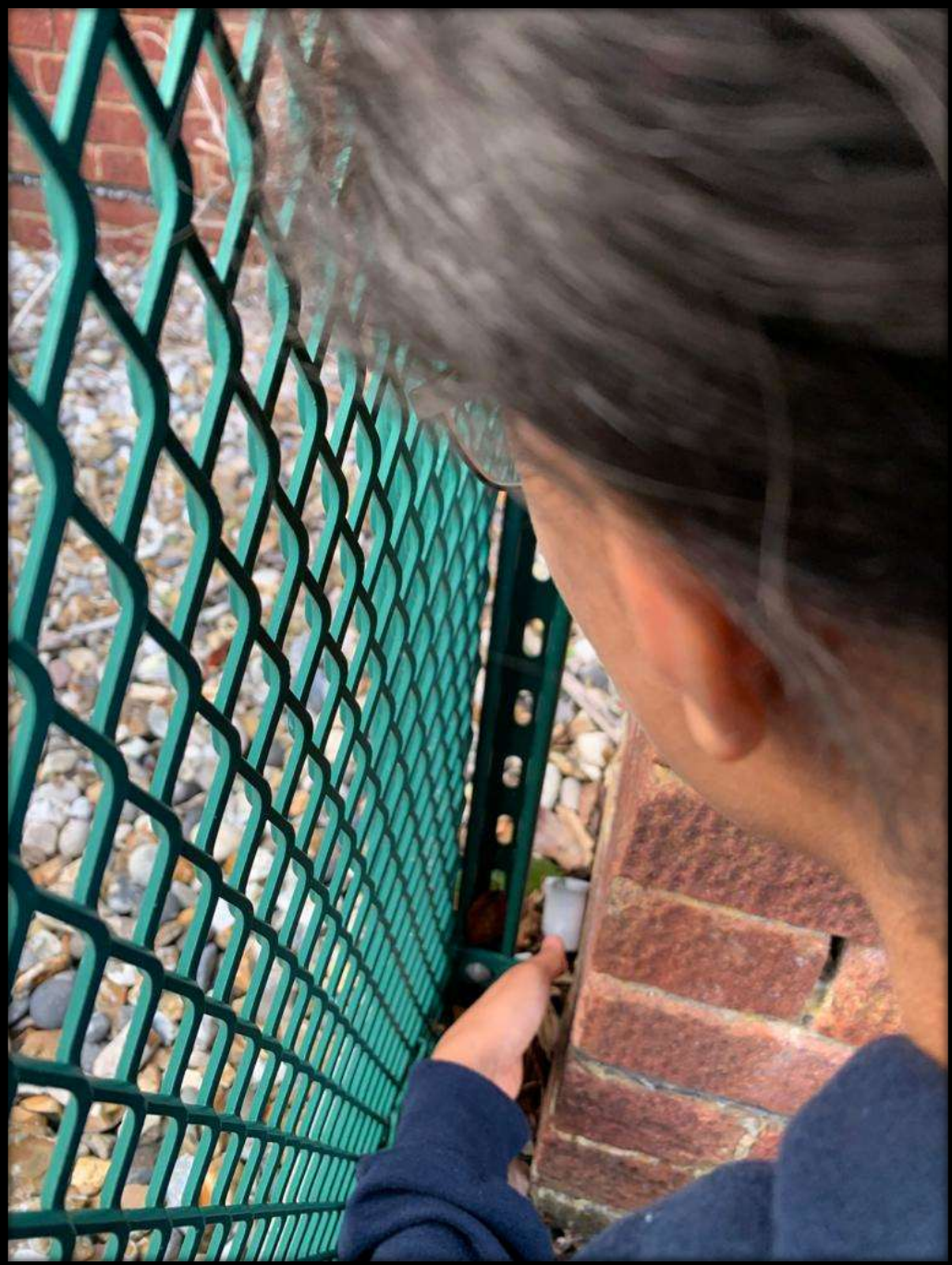
Photos











Matthew 6:19-21 and

Jeremiah 29:13 and

Geocaching

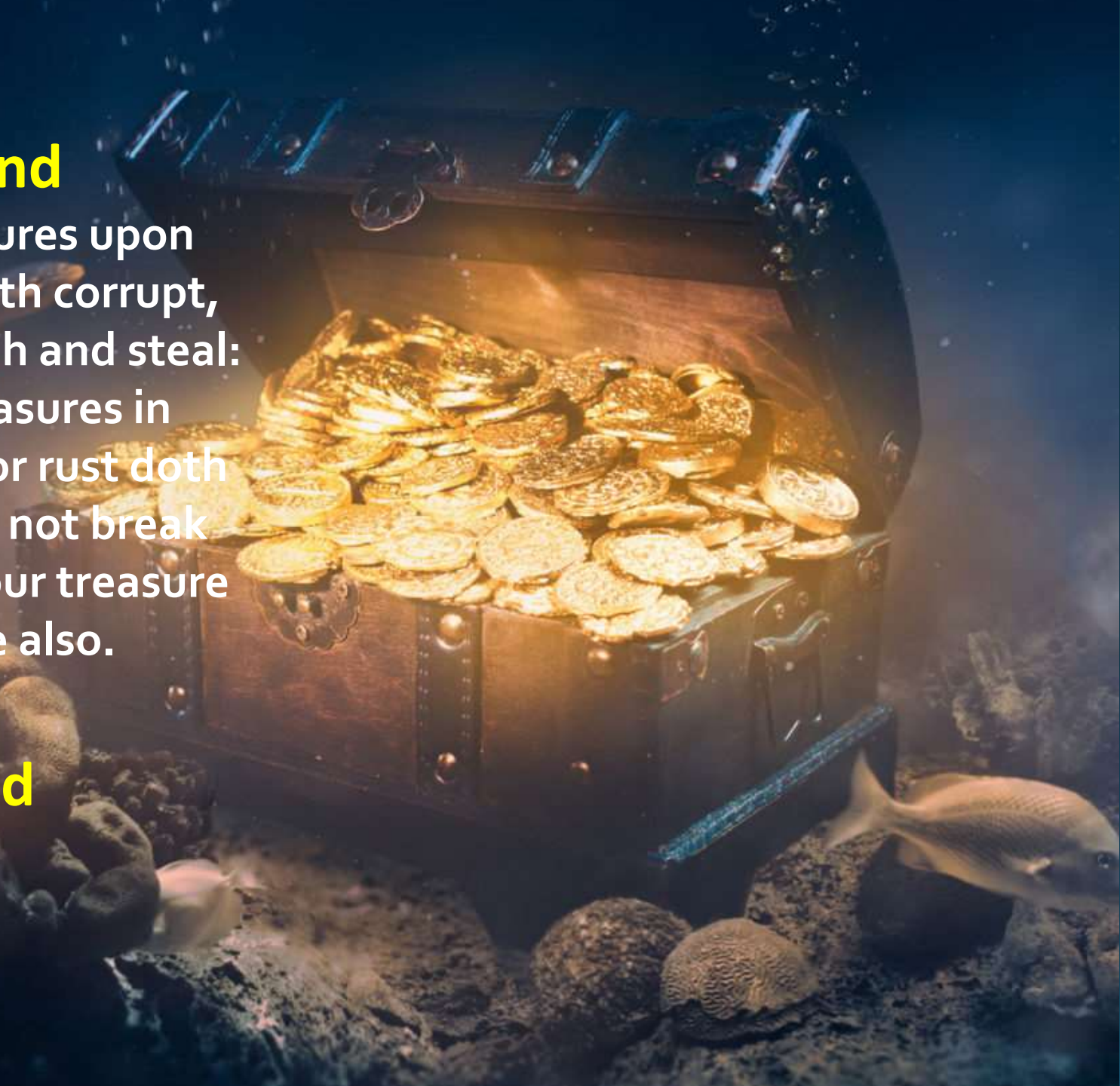


Matthew 6:19-21 and

Lay not up for yourselves treasures upon earth, where moth and rust doth corrupt, and where thieves break through and steal: but lay up for yourselves treasures in heaven, where neither moth nor rust doth corrupt, and where thieves do not break through nor steal, for where your treasure is, there will your heart be also.

Jeremiah 29:13 and

Geocaching



Matthew 6:19-21 and

Jeremiah 29:13 and

And ye shall seek me, and find me,
when ye shall search for me with
all your heart.

Geocaching



The End

