



MY SENSES AWARD

By
Charlotte Fidelia

14th July 2020



WELCOME



The logo for Cradle Roll Sabbath School, featuring the words "Cradle Roll" on the top line and "Sabbath School" on the bottom line, with each letter in a different color.

Let us go

to the

house

of the

Lord

Psalm 122:1

PRAYER TIME



MR PENCIL'S WORKSHEET

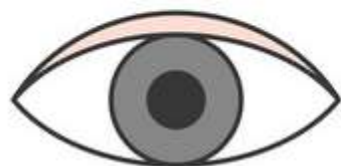




HOW MANY SENSES DO WE HAVE?



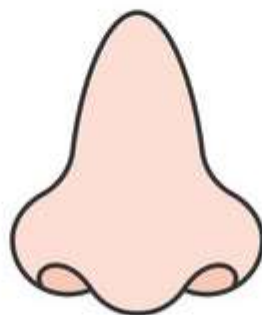
WE HAVE 5 SENSES!



SIGHT



HEAR



SMELL



TASTE



TOUCH



WHAT DO WE USE TO SEE?



WE USE OUR EYES!



LOOK IN THE MIRROR – WHAT DO YOU SEE?











GOD MADE A PROMISE TO NOAH







WHAT IF WE COULDN'T SEE?







WHAT DO WE USE TO HEAR?



WE USE OUR EARS!



WHAT CAN YOU HEAR?









WHY DID GOD GIVE US EARS?







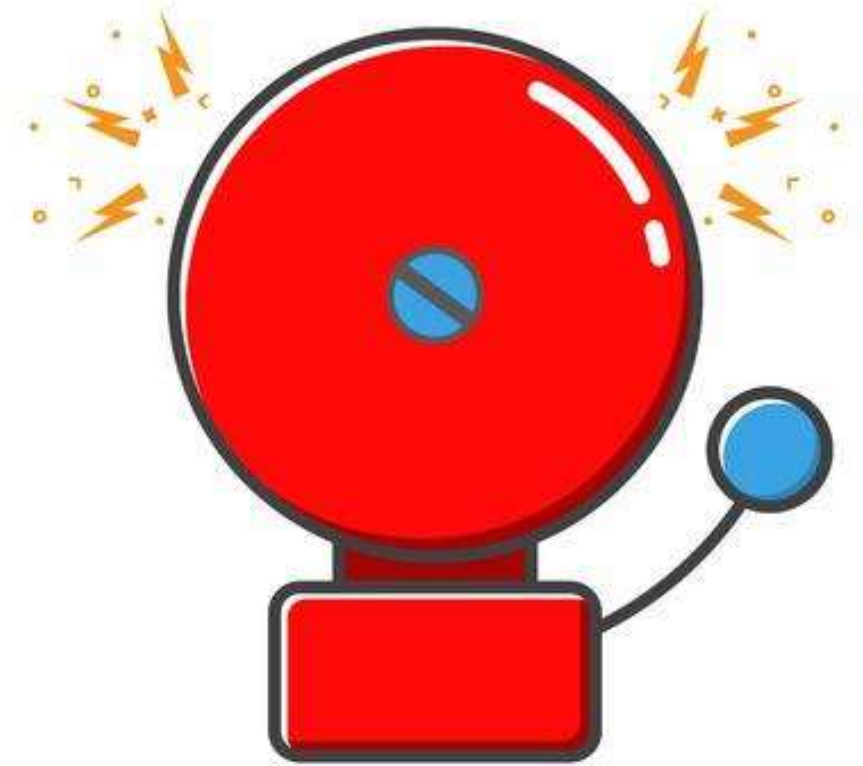
SAMUEL USED HIS EARS TO LISTEN







HOW DO OUR EARS KEEP US SAFE?









WHAT DO WE USE TO TASTE?



WE USE OUR TONGUE!



WHAT CAN YOU TASTE?













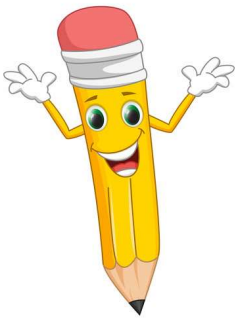
WHY DID GOD GIVE US TASTE BUDS?







ESTHER GAVE TASTY FOOD TO THE KING







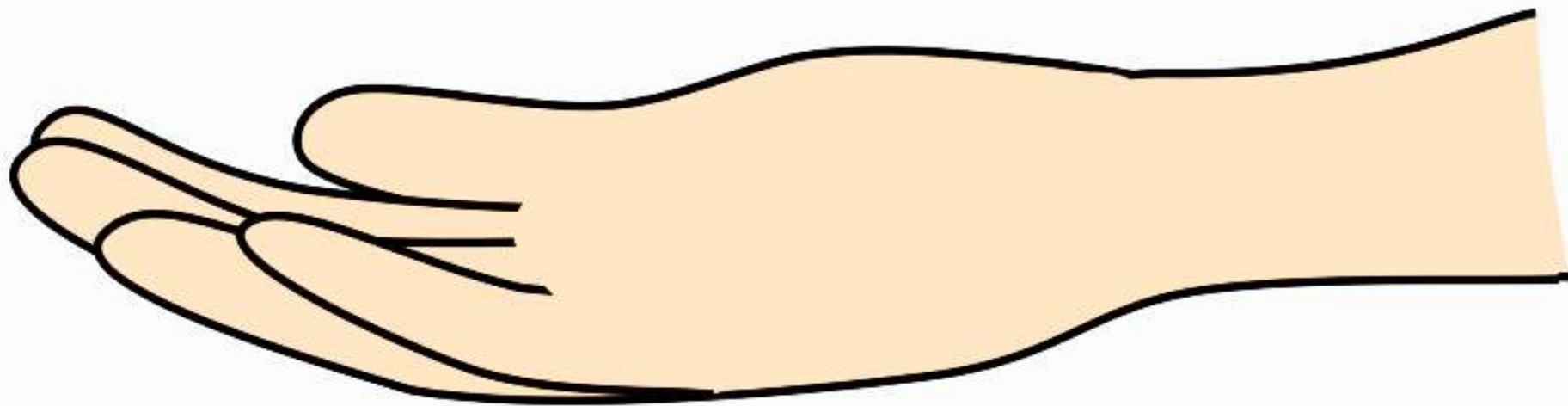




WHAT DO WE USE TO TOUCH?



WE USE OUR SKIN!



WHAT CAN YOU FEEL?



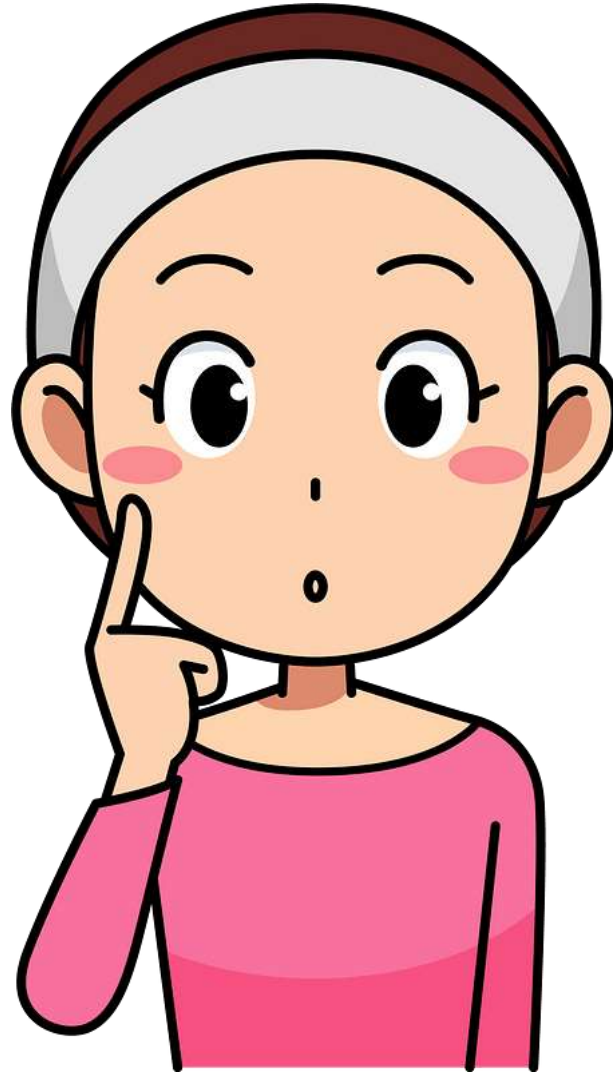








WHY DID GOD GIVE US SKIN?









THE SICK WOMAN TOUCHED JESUS'S CLOTHES

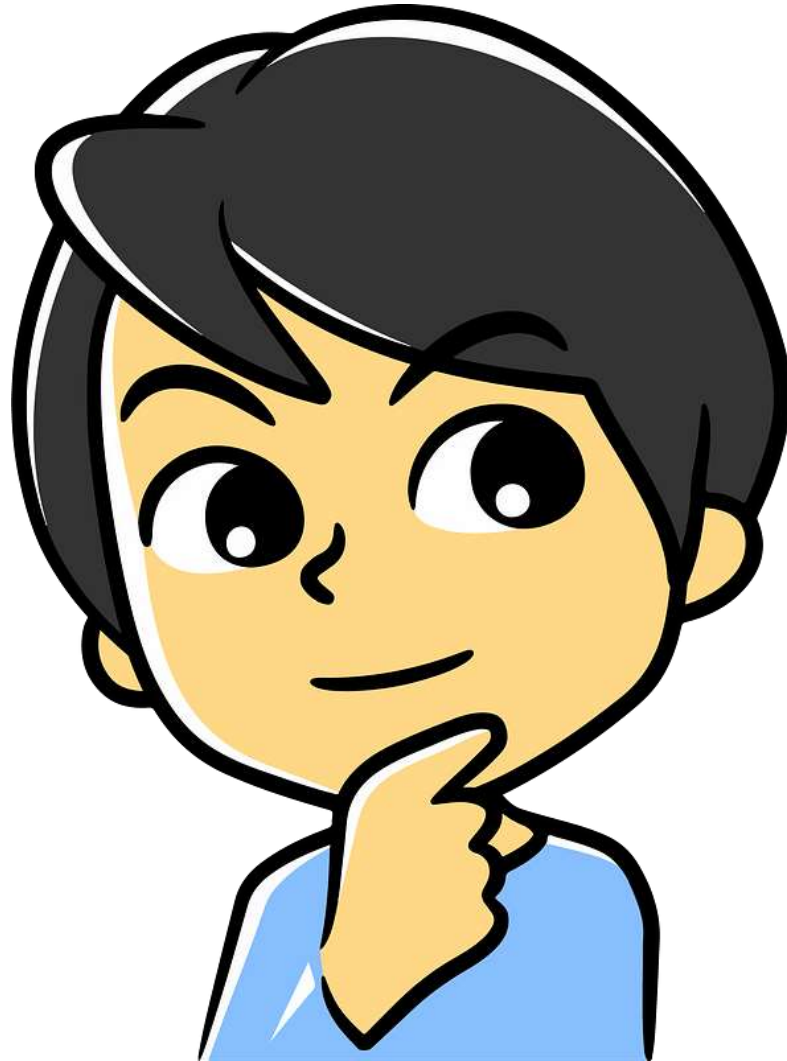








WHAT DO WE USE TO SMELL?



WE USE OUR NOSE!



WHAT CAN YOU SMELL?













WHY DID GOD GIVE US NOSES?













WHAT IF WE COULDN'T SMELL?











PRAYER TIME



Thank You!

The image features the words "Thank You!" in a vibrant, hand-drawn style. The letters are thick and rounded, with various colors and patterns. The word "Thank" is on the top line, and "You!" is on the bottom line. The letters are decorated with patterns like zig-zags, dashed lines, and solid colors. There are several stylized flowers around the text: a large pink flower with a yellow center and white dashed lines, a blue flower with a purple center, and another blue flower with a purple center. The exclamation point is also decorated with a blue and green pattern.