

UK/Ireland Union Pathfinders

FOSSIL HONOR

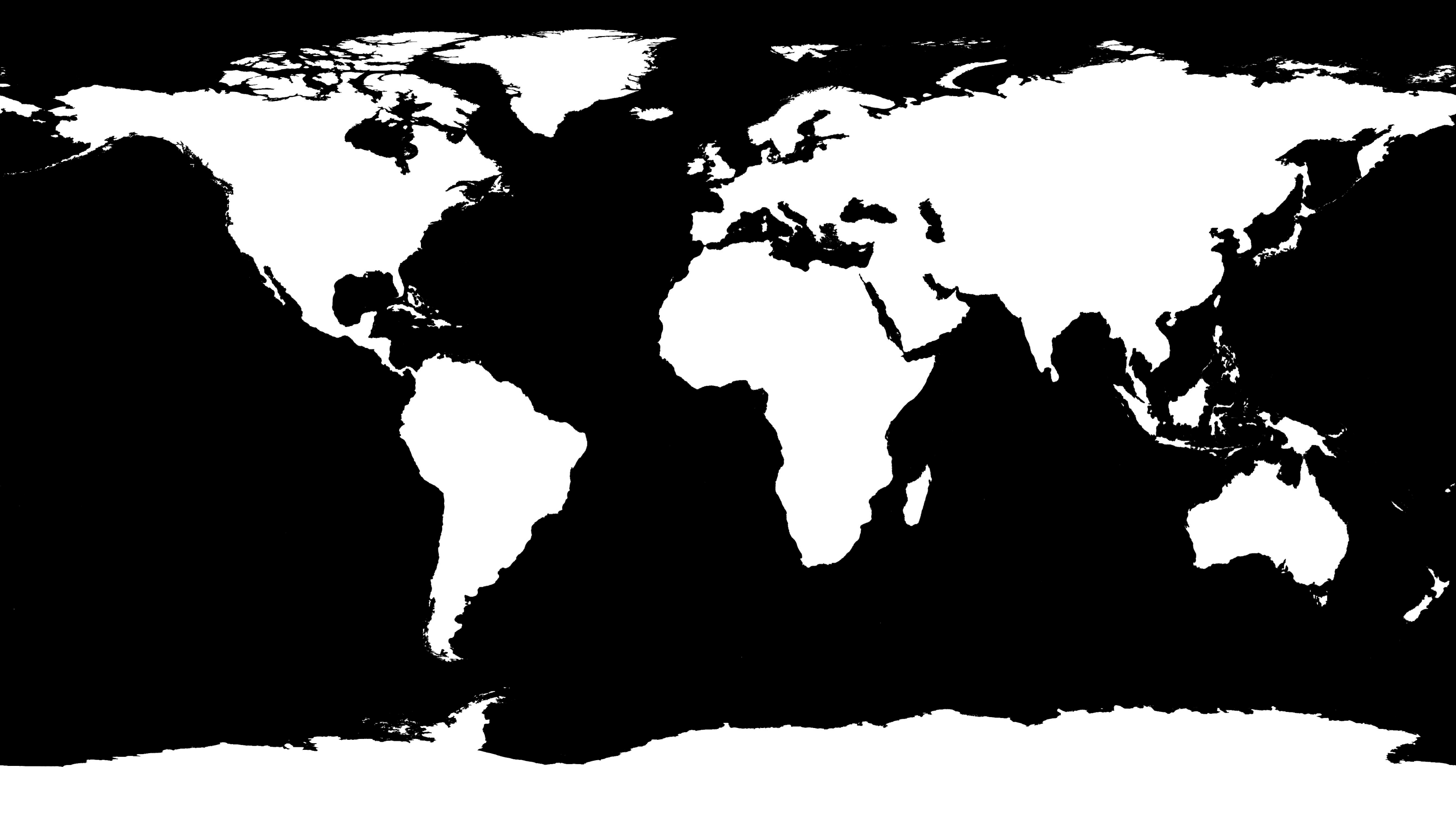


What is a fossil?



The **REMAINS** or **IMPRESSION** of an organism preserved in petrified form, or as mold or cast in rock.

SHOW AND TELL



Fossils are generally found in sedimentary rocks





GEOLOGY



The study of solid materials that make up the earth

FOSSILS



The preserved
remains or traces
of organisms

CATASTROPHISM



The idea that Earth has been affected by short-lived, violent events

PALEONTOLOGY



The study of
ancient life forms
in the fossil record

GRAPTOLITE



A graptolite is a marine fossil animal that lives in colonies

TRILOBITE



Trilobites are
extinct arthropods

DINOSAUR



Any of various
extinct reptiles

MAMMOTH



A large extinct relative of the elephant with long curved tusks, that were grazers

MASTODON



Another extinct relative of the elephant that was smaller than the mammoth and were browsers

CRINOID



Marine creatures including starfish, sea urchins and sea lillies, and others

LINGULA



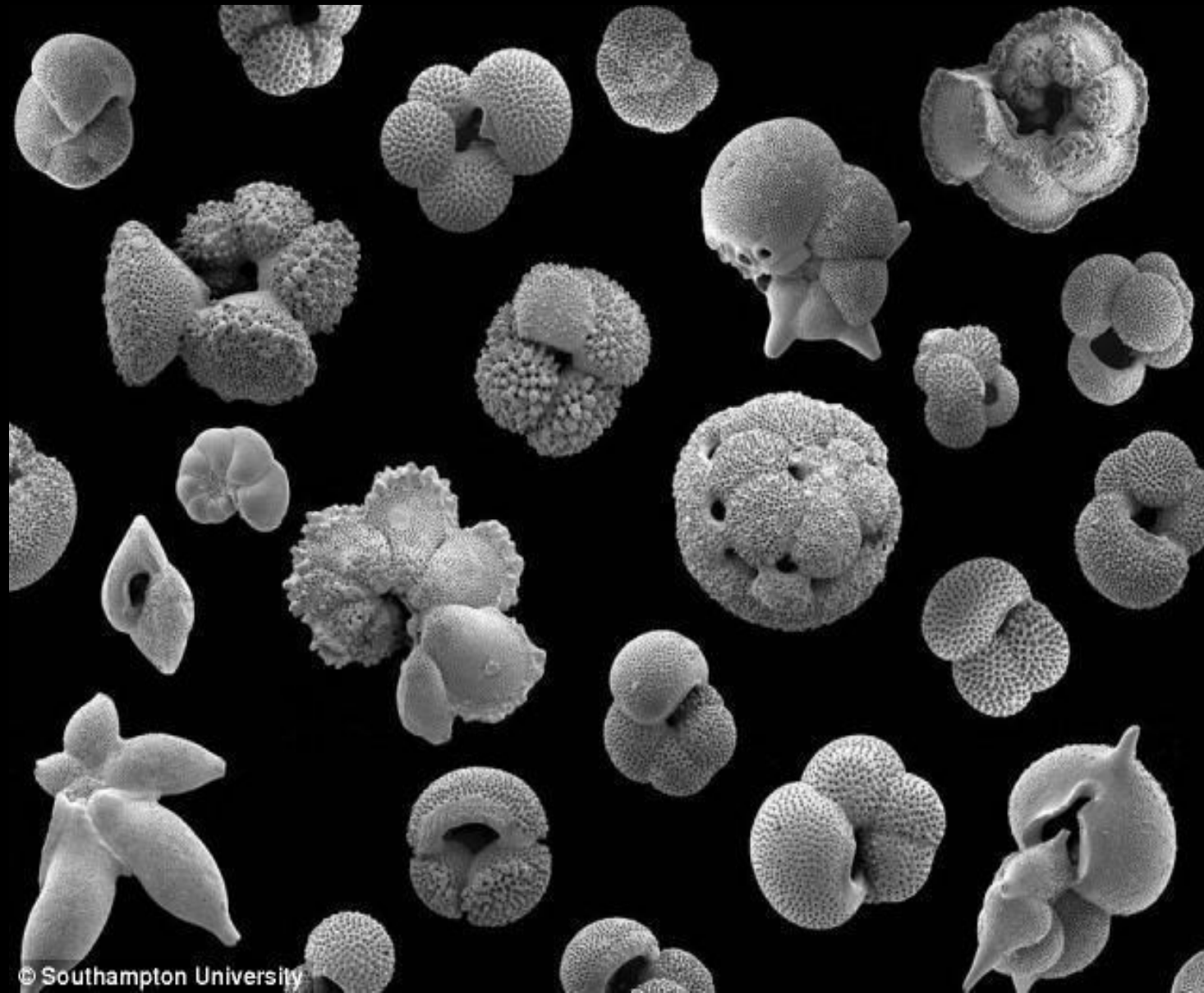
A kind of brachiopod
marine creature with
shells and a stalk it
extends

CALAMITE



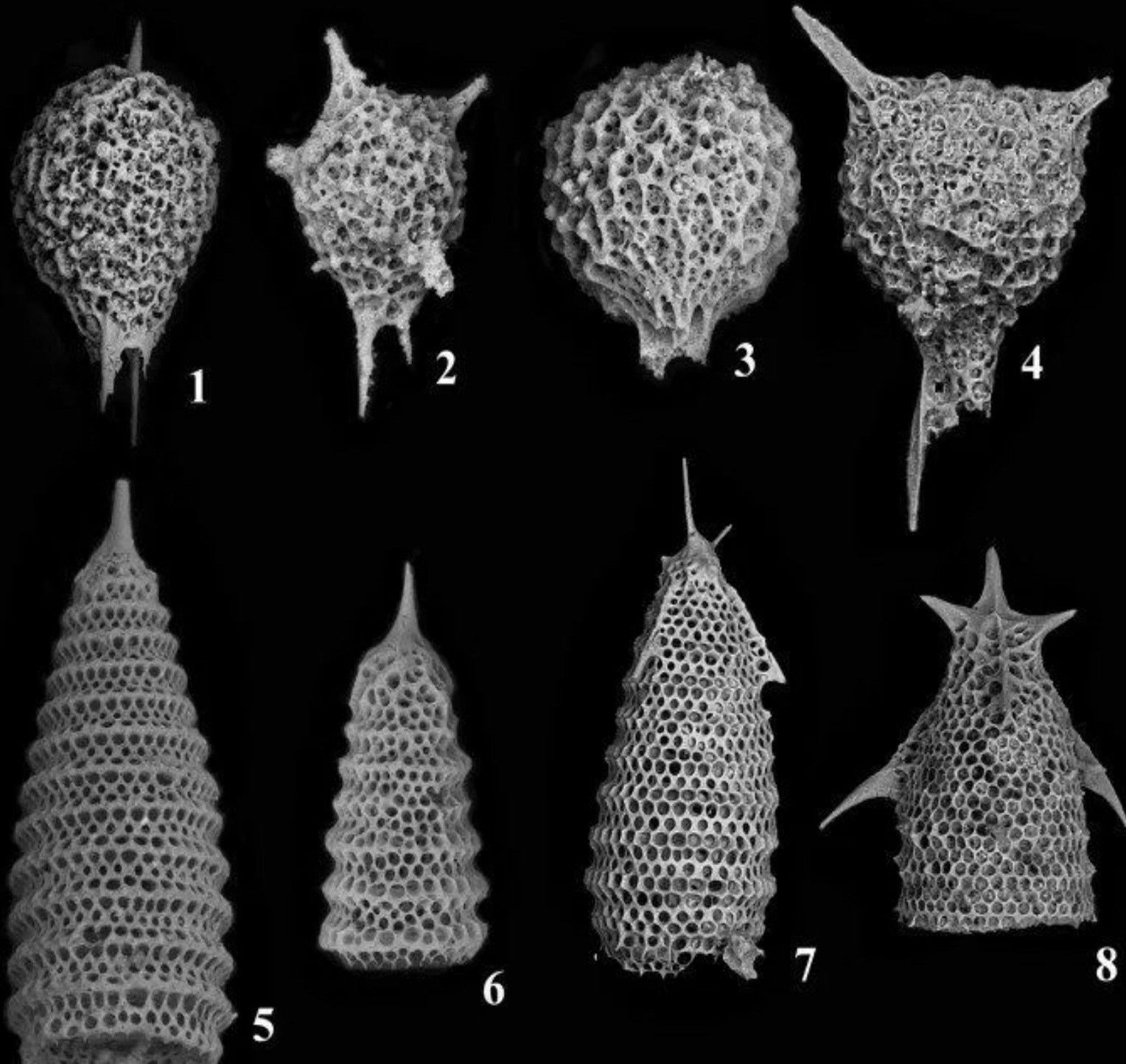
A fossil made when sediment filled the hollow stem of a plant.

FORAMINIFERA



Tiny shelled
marine creatures
that eat algae and
bacteria

RADIOLARIA



Another tiny marine creature that creates a mineral skeleton

PALEOZOIC



The name
evolutionary scientists
give the earliest
geologic era which the
believe started 542
millions years ago

Requirement #3

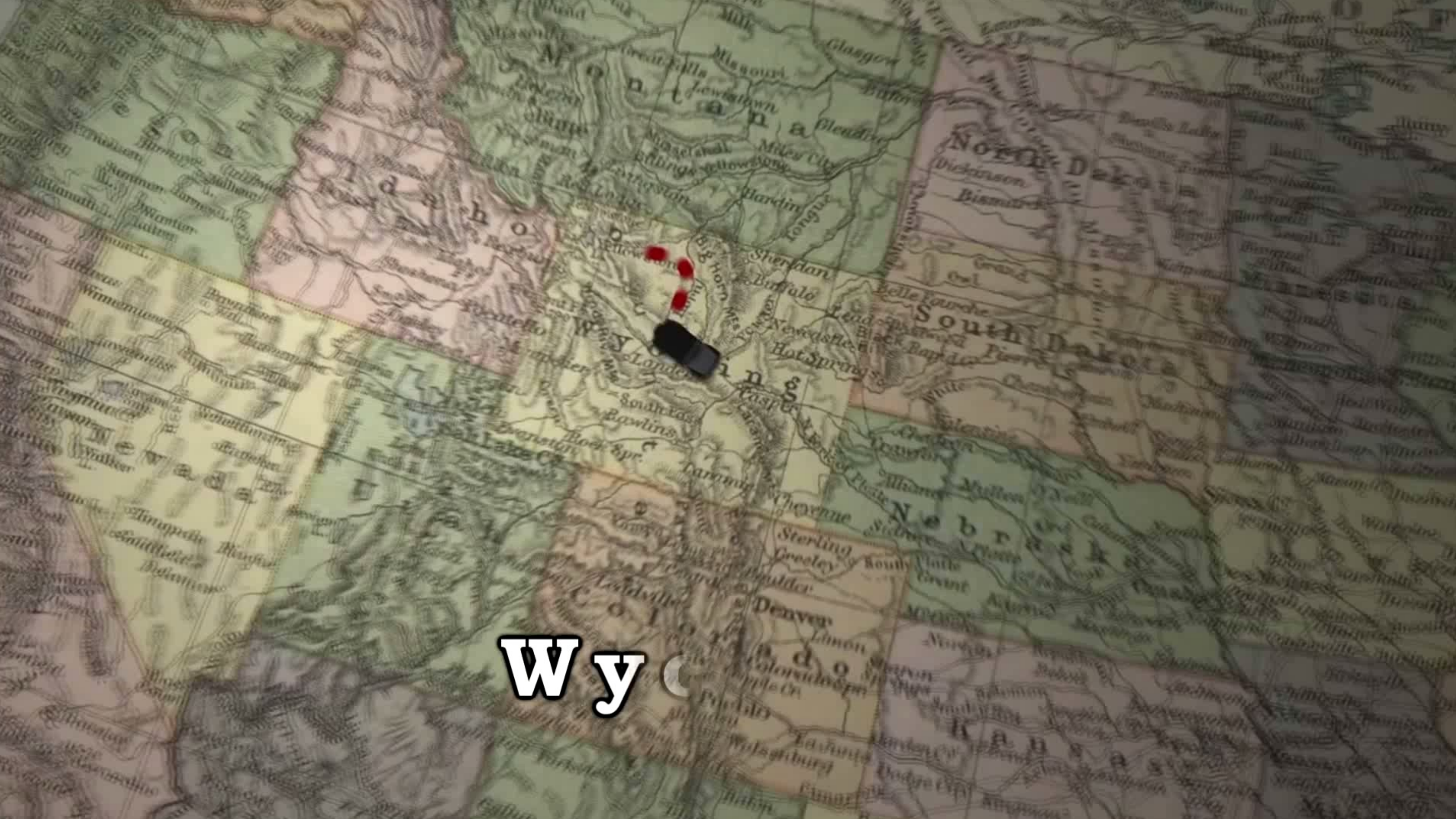
VISIT A FOSSIL BED TO
COLLECT SPECIMENS

or

VISIT A MUSEUM WHERE
FOSSILS ARE ON DISPLAY

plus

MAKE A WRITTEN OR ORAL REPORT



Wy

PROPER REMOVAL OF FOSSILS



Remove delicate specimens using a mallet and a chisel

PROPER REMOVAL OF FOSSILS



A sieve is used to separate smaller fossils from sands and gravels

PROPER REMOVAL OF FOSSILS



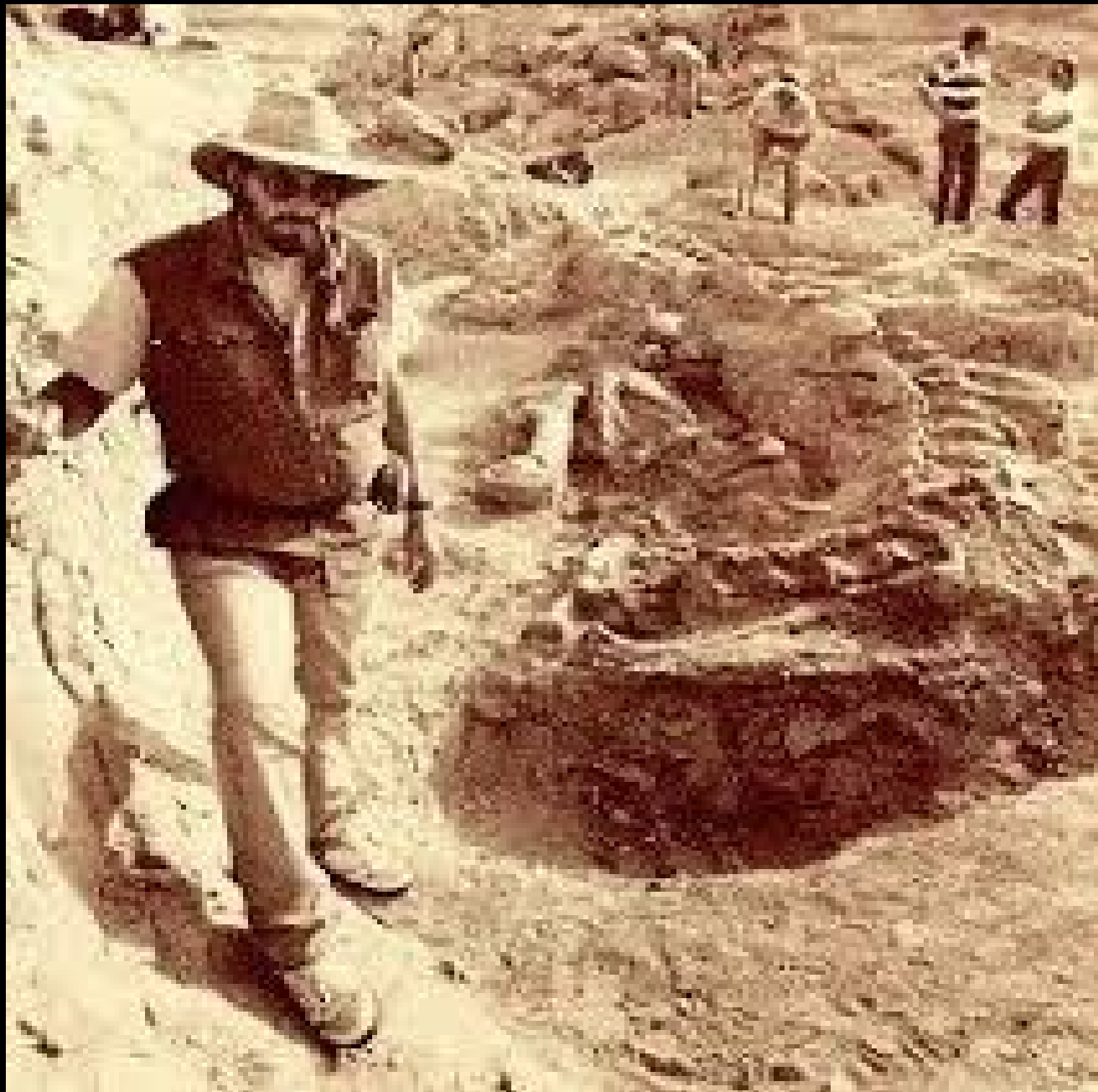
Use water to wash away smaller particles of the matrix surrounding the fossil

PROPER REMOVAL OF FOSSILS



Larger fossils should be cast in plaster in order to move.

PROPER REMOVAL OF FOSSILS



If you find a valuable fossil, do not try to remove it yourself. Contact a professional.

FOSSILS

EVOLUTION vs. CREATION

Both agree that fossils are formed when a creature is quickly buried in sediment.

FOSSILS

EVOLUTION vs. CREATION

They disagree on how long ago this happened.

FOSSILS

EVOLUTION vs. CREATION

Evolutionists believe most fossils were formed MILLIONS of years ago.

Evolutionists believe there is no God and that everything evolved by itself.

FOSSILS

EVOLUTION vs. CREATION

Creationists believe God created everything as it says in the Bible.

Creationists believe that nearly all fossils were formed during Noah's flood less than 10,000 years ago.

Ice Age



TIMING:
After the flood

How explain frozen animals in arctic regions



Cite Bible and Spirit of Prophecy
statements to explain the origin of

COAL
PETROLEUM
FOSSILS
LIMESTONE

Patriarchs and Prophets, pages 107-108

The entire surface of the earth was changed at the Flood.

Everywhere were strewn the dead bodies of men and beasts. The Lord would not permit these to remain to decompose and pollute the air, therefore He made of the earth a vast burial ground. A violent wind which was caused to blow for the purpose of drying up the waters, moved them with great force, in some instances even carrying away the tops of the mountains and heaping up trees, rocks, and earth above the bodies of the dead.

At this time immense forests were buried. These have since been changed to coal, forming the extensive coal beds that now exist, and also yielding large quantities of oil.

QUESTIONS
and
ANSWERS